

Enterprise Information Intelligence Graph (EIIG)

Ramesh Shurma
Founder

12/9/2022

@2022 Orion Governance - Confidential and Proprietary

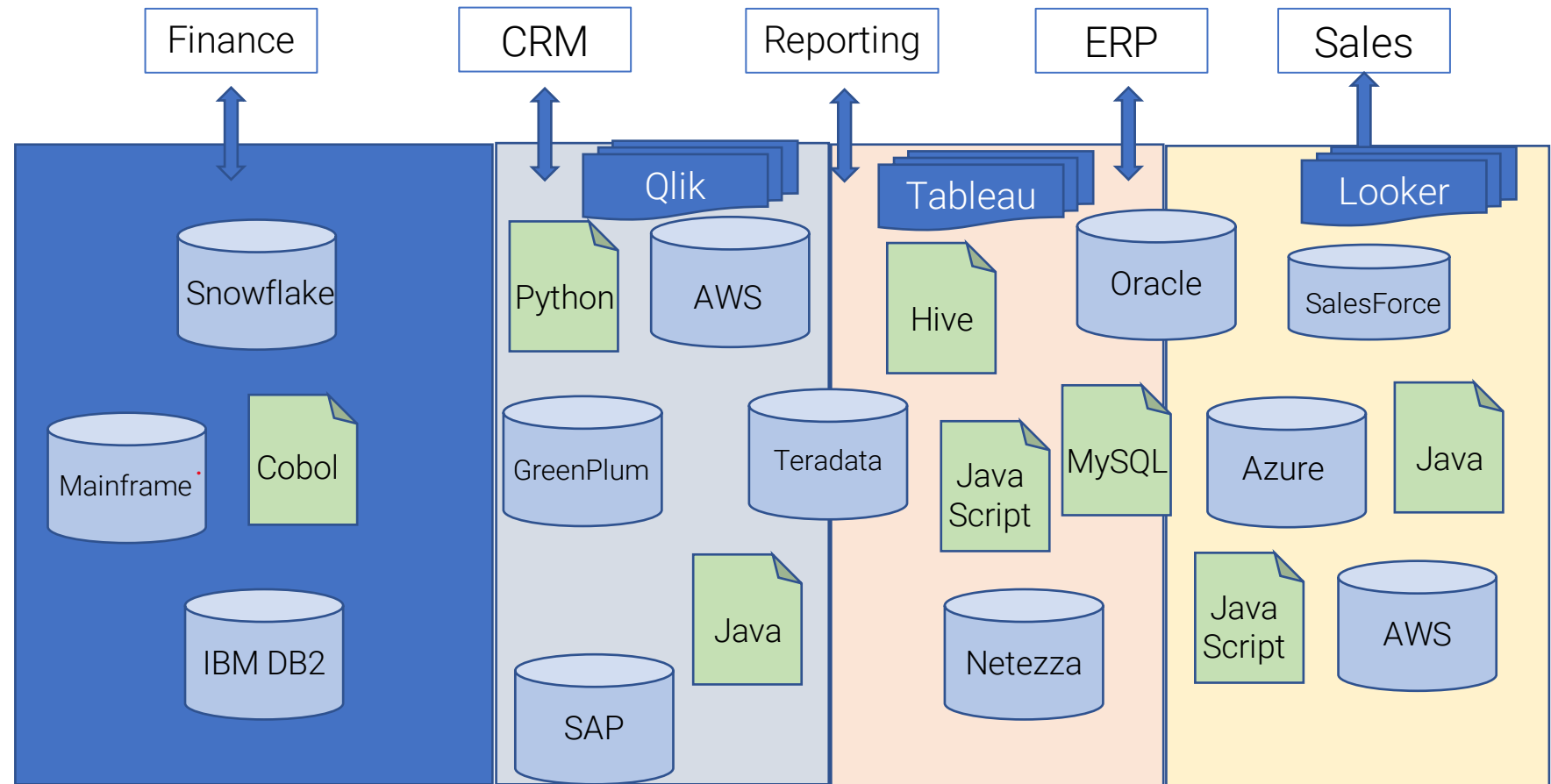


Orion
Governance Inc.



Typical Siloed Enterprise

Enterprise Functions



BackOffice:
Collection of Technologies And Vendors that Don't talk to each other

Enterprise through the Data Fabric

Enterprise Functions

BackOffice:

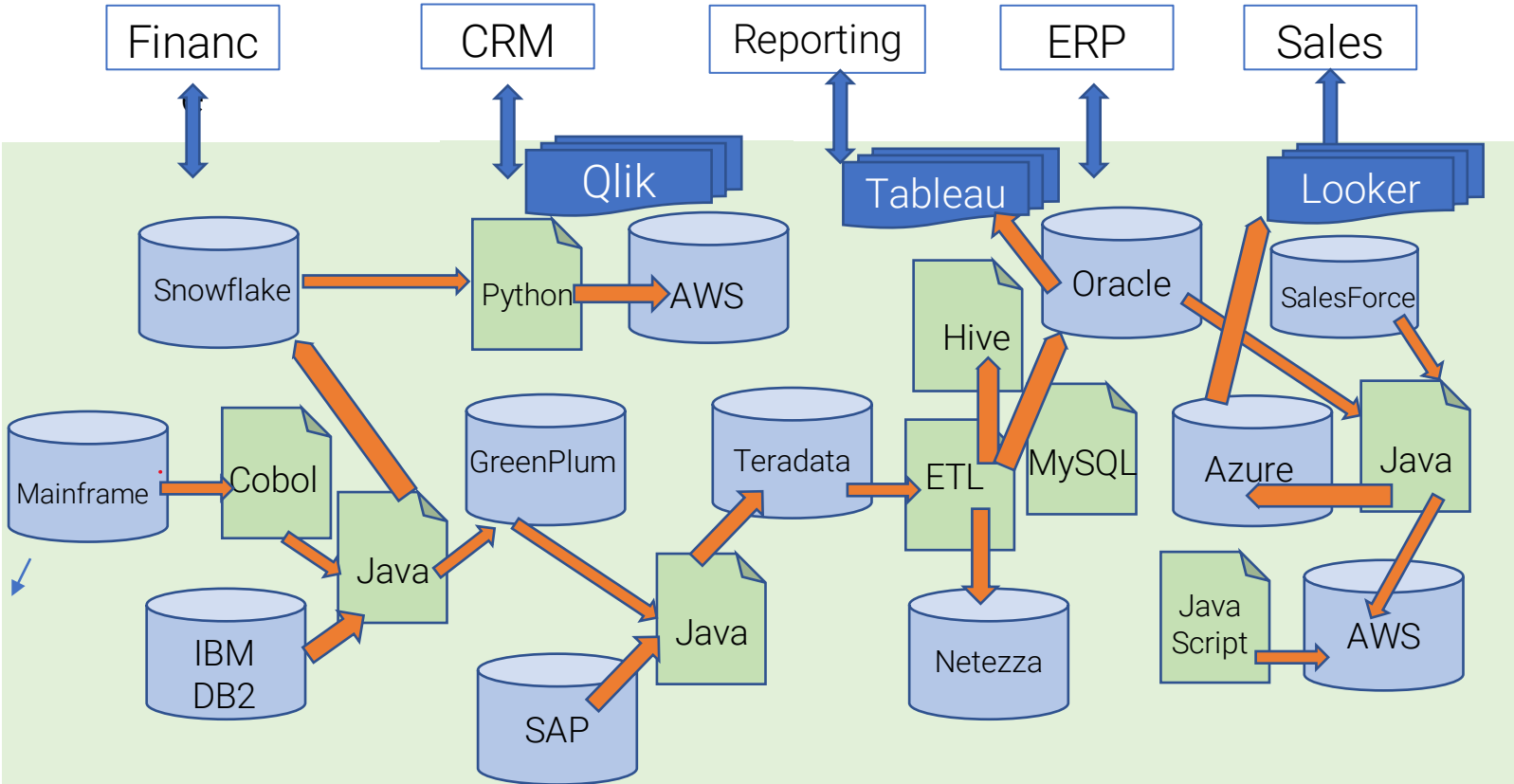
Breaking down of Silos creating a seamless Data Fabric

Vendor/Technology agnostic picture of information flow

Automated

ROI realized in hours/days

100% Guaranteed success



Why is it a must have?

- Reduce Risk Exposure
- Accelerate business turnaround
- Shorten time spent in impact analysis
- Accelerate legacy modernization
- Comprehensive catalog of enterprise information
- Cut IT costs
- Accelerate Regulatory compliance
 - GDPR, BCBS-239, AML.....
- Test Automation
- Technology, Platform and Vendor agnostic view of Information flow

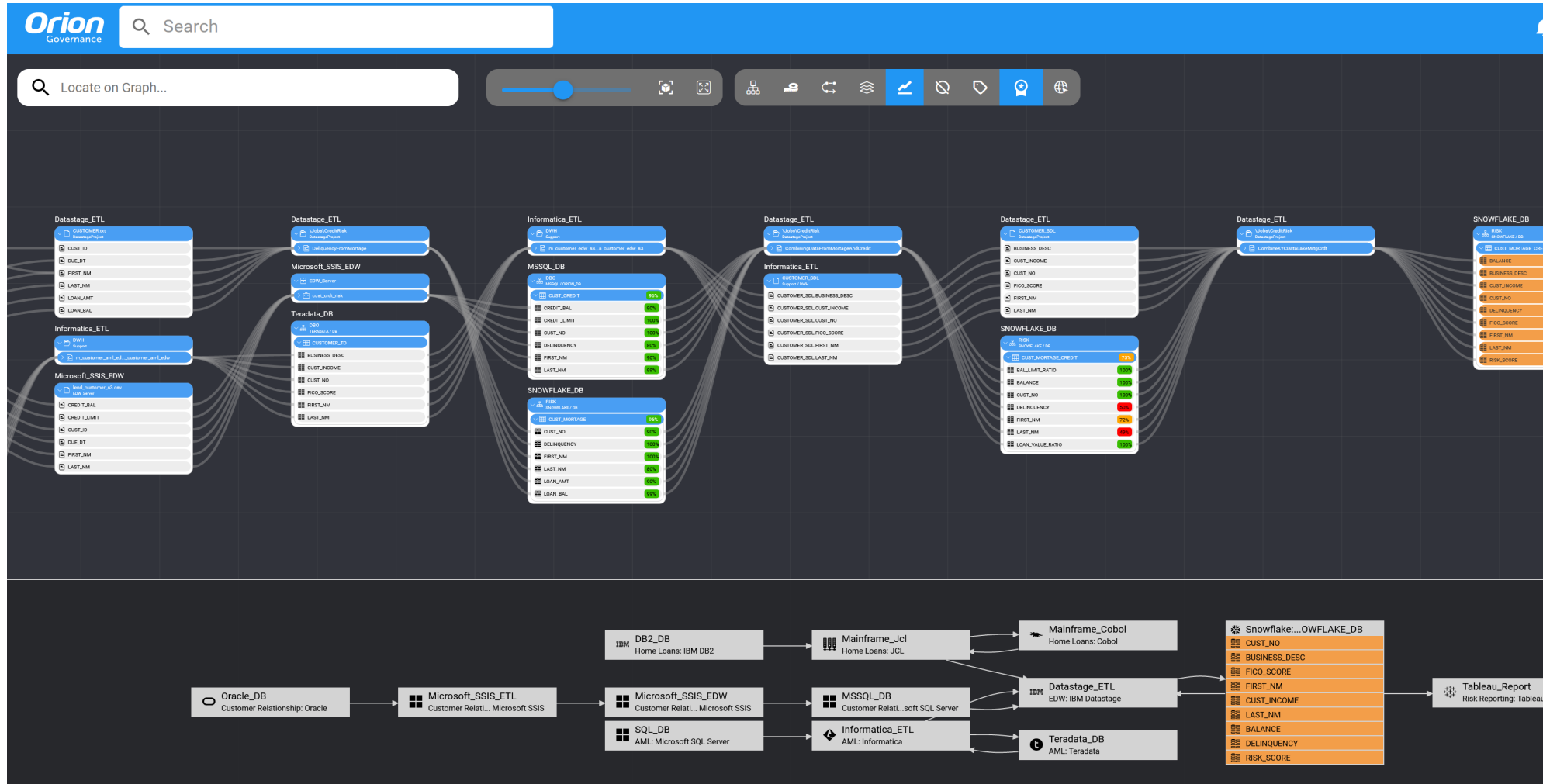
Keys to Success

- Automated ability to decode data and process movement
- Reduce the amount of human capital
- Acceleration
- Agility
- Near real-time information
- Low maintenance architecture
- Active Metadata
- Different perspectives for different roles

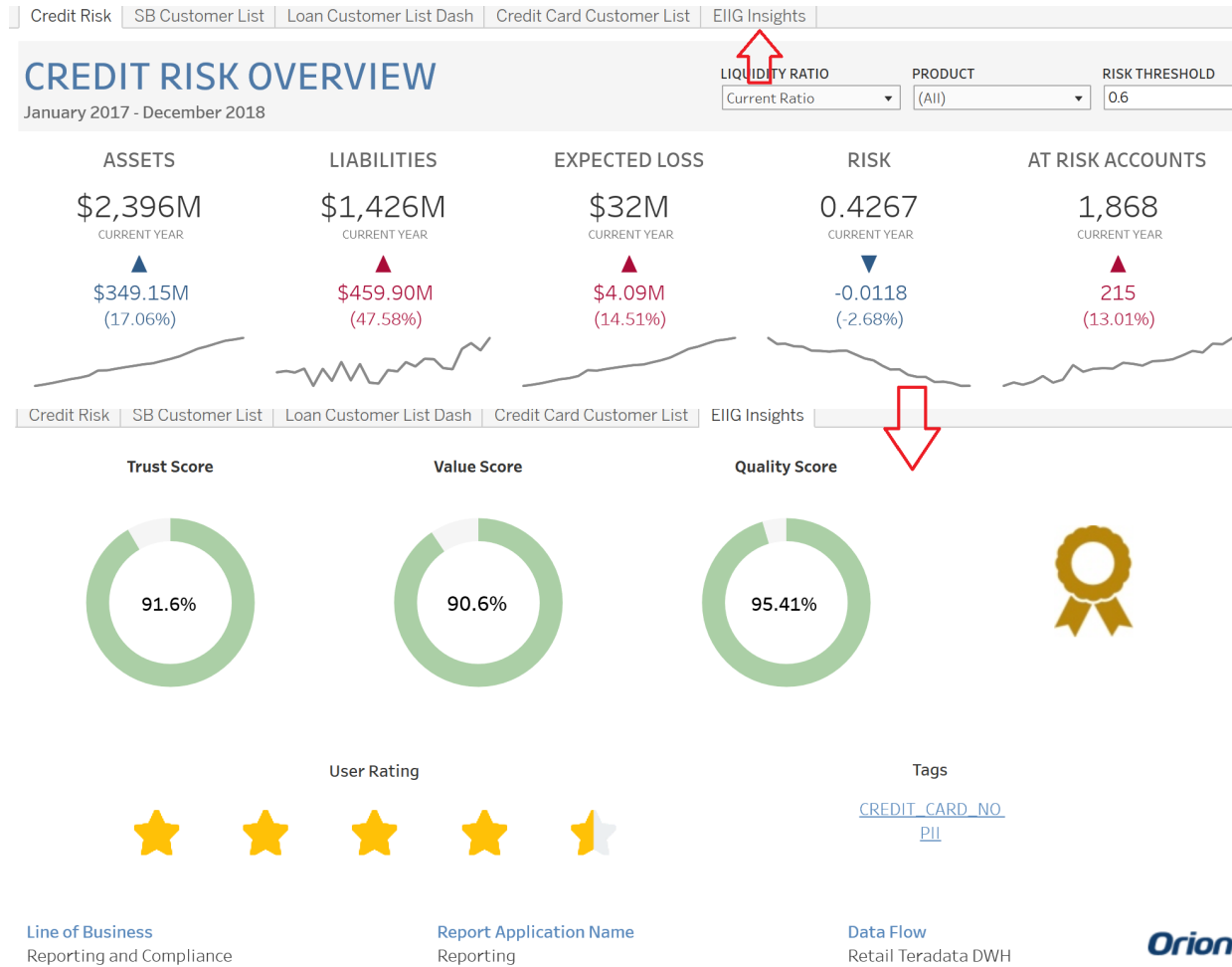
Orion EIIG

The screenshot displays the Orion Governance EIIG interface. At the top, there is a search bar and a user profile for Ramesh Shurma. Below this is a navigation bar with a search field for graph locations and various tool icons. The main area shows two data lineage flows. The top flow starts with 'IBM DB2: Co...Banking DB2' (containing 'INTEREST_RATE_DETAILS') leading to 'Core Banking Mainframe', then 'Retail Pentaho ETL', 'Retail Teradata DWH', and finally 'Accounts Tab...eau Analysis'. The bottom flow starts with 'Core Banking System' (containing 'INTEREST_RATE_DETAILS') leading to 'Data Warehouse' and 'Reporting'. Below the lineage flows, the 'INTEREST_RATE_DETAILS' node is selected, and the 'Impact' view is shown. This view illustrates the downstream impact of the selected node, showing arrows pointing from 'INTEREST_RATE_DETAILS' to 'Core Banking Mainframe', 'Retail Pentaho ETL', 'Retail Teradata DWH', and 'Accounts Tableau Analy'. The 'Core Banking Mainframe' node further impacts 'IBM Core Banking DB2'. The interface includes a sidebar with navigation icons and a top right corner with 'LINEAGE' and 'SUMMARY' options.

Orion EIG – Data Trust Propagation



Orion EIIG – Report Insights

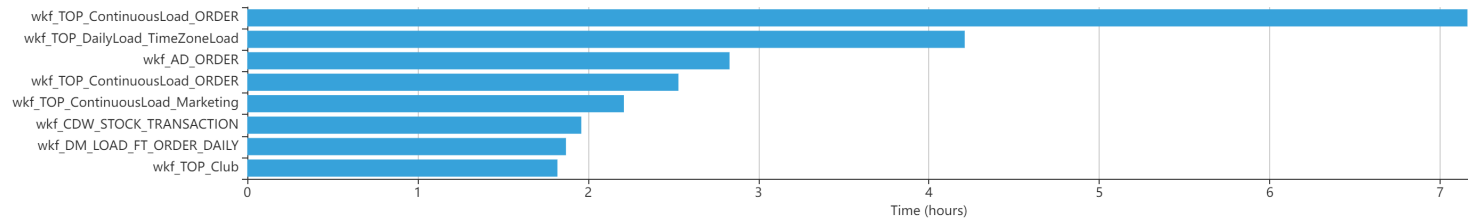


Practical use - A retailer's story

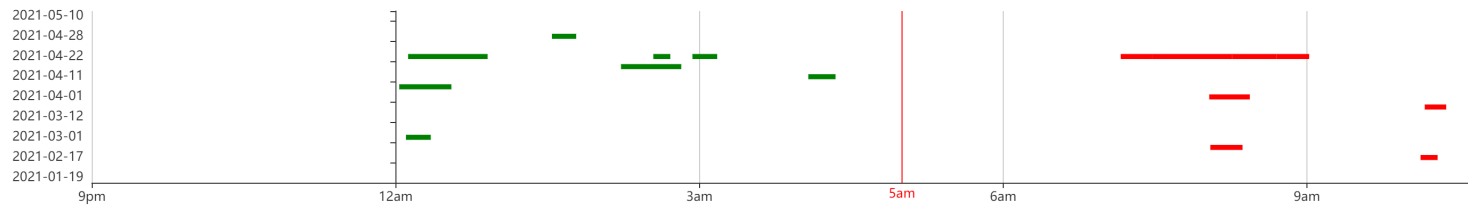
SLA Violations

	Jan				Feb				Mar				Apr				May				
S	3	10	17	24	31	7	14	21	28	7	14	21	28	4	11	18	25	2	9		
M	4	11	18	25	1	8	15	22	1	8	15	22	5	12	19	26	3	10			
T	5	12	19	26	2	9	16	23	2	9	16	23	6	13	20	27	4	11			
W	6	13	20	27	3	10	17	24	3	10	17	24	7	14	21	28	5				
T	7	14	21	28	4	11	18	25	4	11	18	25	1	8	15	22	6				
F	1	8	15	22	5	12	19	26	5	12	19	26	2	9	16	23	7				
S	2	9	16	23	6	13	20	27	6	13	20	27	3	10	17	24	1	8			

2021-03-07



wkf_TOP_ContinuousLoad_ORDER



Active metadata of process execution times
Tied to the physical data pipelines.

Impact analysis helps identify the impacted reports and ultimately the costs associated with delayed orders.

Thank You

Visit our website to learn more:
www.oriongovernance.com

Contact us:
info@oriongovernance.com

Follow Us on LinkedIn and YouTube:

